

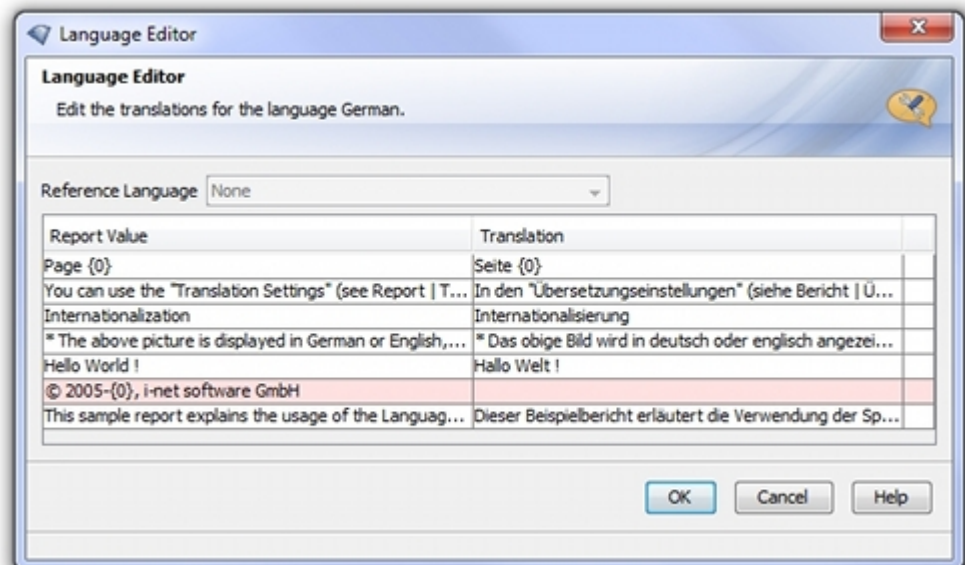
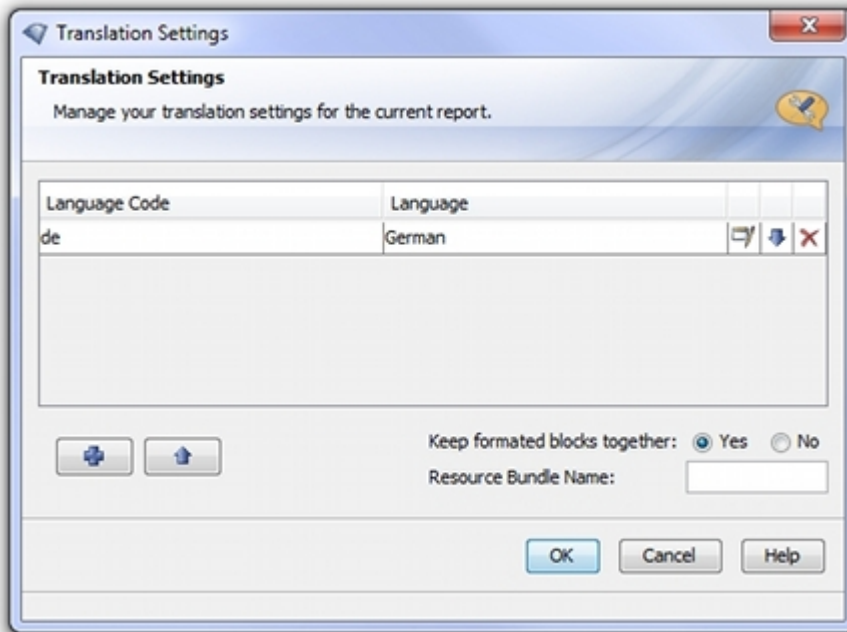


Internationalization

This sample report explains how to use the Language Editor to create internationalized reports using i-net Designer. The text of this report will be displayed depending on the locale of the client if the server configuration property "Use Client Locale" is active.

Hello World !

You can use the "Translation Settings" (see Report | Translations) to configure one or more languages of the report. The language resources will be saved in the rpt file. It is not necessary to add the language with which the report was designed.



* The above images are displayed in German or English. If the configuration property "Use Client Locale" is active, then the language depends on the locale of the client. See suppress formula of the images.